

# DETENTION DOORS AND FRAMES



DETENTION



DETENTION  
GLAZING



BALLISTIC



SINGLE DOOR



PAIR DOOR



GREEN



LISTED BY GUARDIAN  
FIRE TESTING  
LABORATORIES



USA-MADE

## CUSTOM OPTIONS:



FIRE RATED



POSITIVE  
PRESSURE



TEMPERATURE  
RISE



APPROVED  
WITH SAFTI **FIRST**  
GLAZING



SMOKE RATED

## PRODUCT ADVANTAGES

- ▶ Tested to ASTM F1450, Standard Test Methods for Hollow Metal Swinging Door Assemblies for Detention & Correctional Facilities; and certified to meet NAAMM/HMMA 863 requirements for use in detention and correctional facilities.
- ▶ Complies with ASTM F1233, Standard Test Method for Security Glazing Materials and Systems; ASTM F1915, Standard Test Methods for Glazing for Detention Facilities; ASTM F1592, Standard Test Methods for Detention Hollow Metal Vision Systems; ASTM F1577, Standard Test Methods for Detention Locks for Swinging Doors; ASTM F1643, Standard Test Methods for Detention Locks for Swinging Doors; SDI A250 Specifications for Standard Steel Doors and Frames.
- ▶ Meets UL 752 Level 3 Ballistic ratings. All detention doors that meet F1450 are required to have UL 752 Level 3.
- ▶ Depending on glazing selection, door thickness ranges from 2 in. to 4 in.
- ▶ Can be supplied to also meet smoke and fire ratings up to 3 hours with positive pressure.
- ▶ For interior or exterior applications.
- ▶ Listed and labeled by Guardian Fire Testing Laboratories, Inc.
- ▶ USA-manufactured for fast lead times and competitive pricing.
- ▶ 5 year manufacturer's warranty.



## EXAMPLES OF CDCR DOORS



CDCR Door Type A

CDCR Door Type C

CDCR Door Type F

## DOOR CONSTRUCTION

Doors and door frames are made in 14-gauge steel and insulated to meet the 450° F temperature rise door requirements. Pair doors include a vertical mullion. Door frames are shipped welded.

## HARDWARE OPTIONS

**Titan Metal Products** offers standard hardware packages and can accommodate most specialty hardware options.

## APPROVALS

ASTM F1450, ASTM F1233, ASTM F1915, ASTM 1592, ASTM F1577, ASTM F1643, SDI A250, UL 752, UL 1784, NFPA 80, NFPA 252, UL 10C, UL 10B, CAN/ULC-S104, HMMA 860, HMMA 861, HMMA 862, HMMA 863, DEMA 004, CPSC 16 CFR 1201, ANSI Z97.1



**Titan Metal Products**  
USA

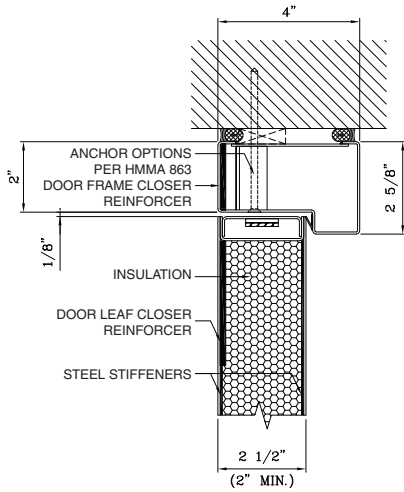
1-866-TITANMP (848-2667) |

[www.titanmetalproducts.com](http://www.titanmetalproducts.com)

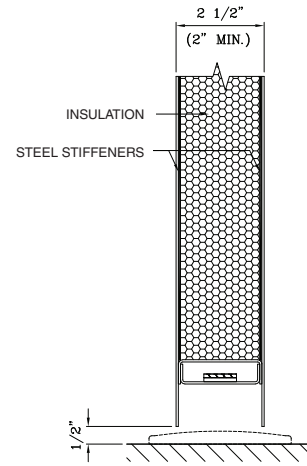
# DETENTION DOORS AND FRAMES

## TYPICAL DETAILS

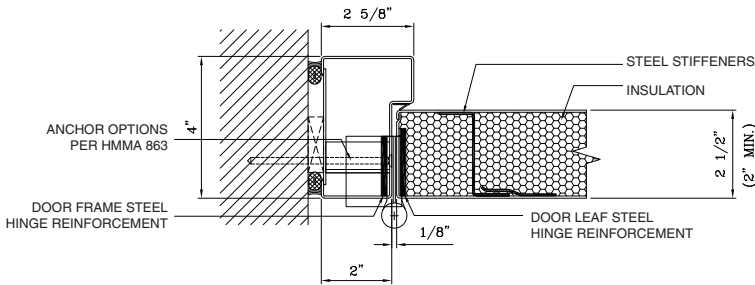
### Solid Door



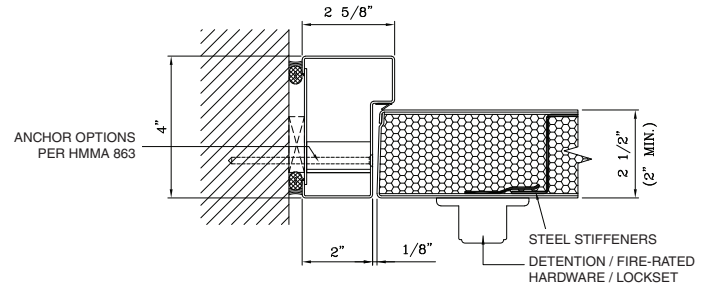
**DOOR TOP RAIL**



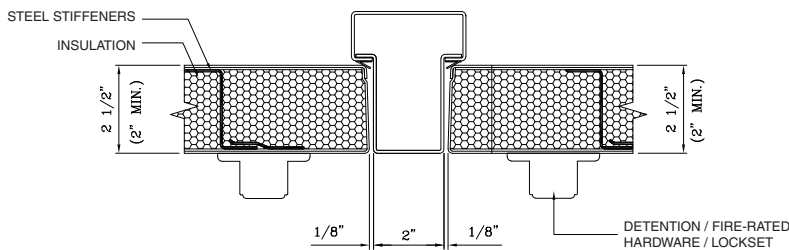
**DOOR BOTTOM RAIL**



**DOOR JAMB AT HINGE**



**DOOR JAMB AT LOCK**



**DOOR MEETING STILES**

## MEMBERSHIPS



© Titan Metal Products. September 2024