



**Titan Metal Products**  
USA

# SPECIALTY DOORS & FRAMES





# ABOUT TITAN

## MORE THAN A MANUFACTURER

As the leading manufacturer of specialty entrances and storefronts, **Titan Metal Products** offers the highest quality, USA-made, standard and custom metal doors and frames since 1977. Through a recent acquisition by **SAFTI FIRST®**, leading USA-manufacturer of advanced fire rated glass and framing systems, **Titan Metal Products** now has the ability to offer the complete solution with custom fabrication.

Whether your application requires fire ratings, bullet resistance, detention security, smoke ratings, stainless steel, acoustic, hurricane ratings, blast ratings and more, **Titan Metal Products** has the answer for your next project.



## TESTED AND CERTIFIED



Our products are listed and labeled by nationally recognized testing laboratories approved by OSHA.

## MEMBERS OF





▲ State-of-the-art manufacturing facility in Merced, CA

## WORLD-CLASS FACILITY



▲ Bill O'Keeffe, President & CEO

**Titan Metal Products** has a state-of-the-art manufacturing facility in Merced, CA. We are constantly investing in the latest computer-aided manufacturing equipment and other technologies to deliver consistently high product quality with fast lead times and competitive pricing.

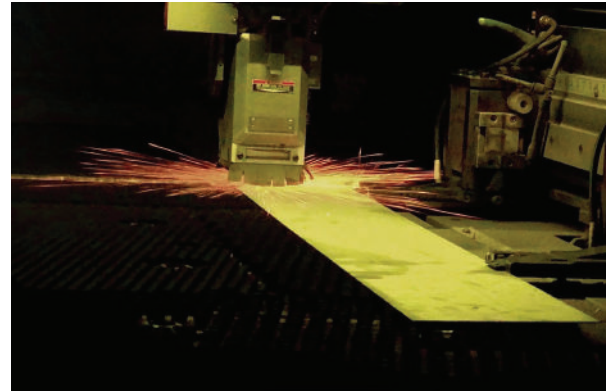
## THIS INCLUDES

- ▶ Amada Laser Cutting System
- ▶ Amada Hydraulic Press Brake
- ▶ Automated Door Sanders
- ▶ Automated Seam Welders
- ▶ In-house Paint Line



# ABOUT TITAN

## STATE-OF-THE ART EQUIPMENT





## SKILLED CRAFTSMEN

Every employee that works in the **Titan Metal Products** manufacturing facility is a skilled craftsman with years of experience in metal fabrication. Each job that goes through our shop floor is built with a high level of efficiency without sacrificing precision and accuracy.

In addition, our employees undergo a rigorous training program that ensures the safety of each employee.



## SUPERIOR CUSTOMER SERVICE

Should you require assistance at any stage of your project – whether it's product selection, budget pricing or installation questions, our dedicated and knowledgeable staff are always ready!



CALL US TOLL-FREE AT **1-866-TITANMP (848-2667)**



EMAIL US AT **INFO@TITANMETALPRODUCTS.COM**



### WE PROUDLY STAND BEHIND OUR PRODUCTS

Our doors and frames come with a standard  
**5-year manufacturer's warranty.**



## DESIGN FLEXIBILITY

Our comprehensive product line of specialty doors and frames provides designers with unmatched flexibility.



▲ 60 minute, full vision, temperature rise Builders Series Door with aluminum clad



ALUMINUM CLAD

STAINLESS STEEL CLAD

Our products are available in multiple finishes including painted (**PPG** high performance fluoropolymer finishes or **Kynar®**), aluminum clad or stainless steel clad. Custom color matching is also available to give designers the exact look that they want.



▲ Builders Series Doors  
by Titan Metal Products

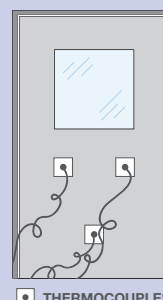
▲ Other suppliers

The Builders Series 60-90 minute doors have a fire rated insulating material to meet the 450° F temperature rise door requirement. Other 60-90 minute doors do not have insulation, which means they have relied on the glazing to meet the temperature rise requirement – contrary to the NFPA 252 fire testing procedures.

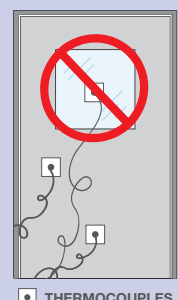
## HOW ARE TEMPERATURE RISE DOORS TESTED?

Doors rated 60 minutes and above are typically subjected to a temperature rise test. Thermocouples are placed on the door surface – not the glass – on the non-fire side to measure the heat transmitted through the door. **Per NFPA 252, the thermocouples cannot be placed over the vision panel.**

✓ CORRECT



✗ INCORRECT





When it comes to full vision, temperature rise doors, the Builders Series 60-90 Minute Temperature Rise Narrow Profile Doors have the slimmest sightlines of any temperature rise door in the market.



▲ Slim sightlines, full vision, temperature rise Builders Series Doors

The Builders Series 20-90 minute, full vision, non-temperature rise and temperature rise doors are available up to **10 ft. tall**, eliminating the need for transoms. Our Security Rated Doors are also available up to **12 ft. tall**. As a custom specialty door and frame manufacturer, **Titan Metal Products** can manufacture any size door for maximum flexibility.



▲ 20-90 minute, full vision, Builders Series Doors up to 10 ft. at The Exploratorium in San Francisco, CA

**Titan Metal Products** offers standard hardware packages (refer to page 10) and can accommodate most specialty hardware options.



## LOOKING FOR A COMPLETE SOLUTION?

Just give us a call at **1-866-TITANMP (848-2667)** or email us at **[info@titanmetalproducts.com](mailto:info@titanmetalproducts.com)** to discuss the solution that you need!



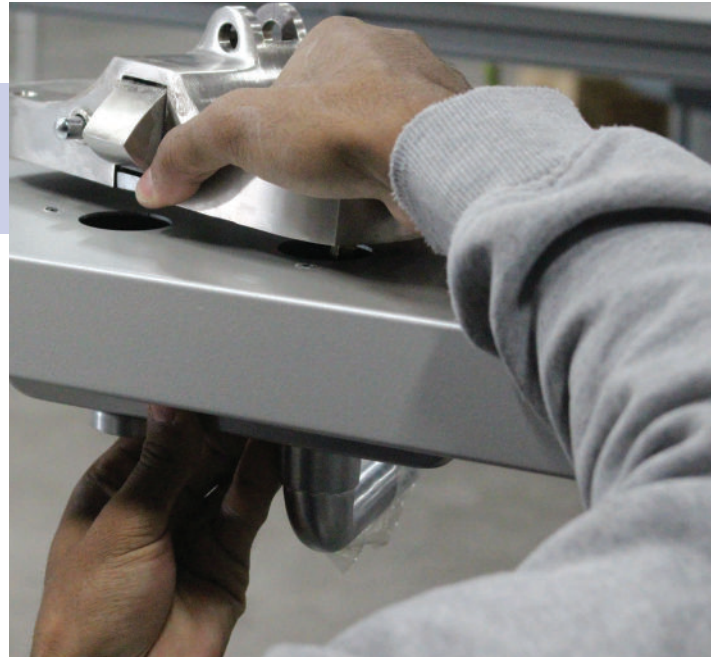
## QUALITY ASSURANCE

Every product that ships out of our manufacturing facility undergoes a comprehensive, multi-step quality assurance process.

**1**

### FULLY PREPPED AND FITTED

Our doors are fully prepped and fitted for hardware, and can be installed in our factory to the fullest extent allowed by the hardware manufacturer.



**2**

### STAGED AND TESTED

Before a door order is shipped, it is staged and hung in our facility to ensure that the door swings open with ease, closes as intended and that the hardware is functioning properly.



Our fit-and-finish quality is the best in the industry and designed to save customers time and money as they install our products in the field.



### CRATED AND CHECKED

3

All orders are carefully crated and shipped to provide maximum protection during transport.



### PACKING LIST AND SHOP DRAWINGS

4

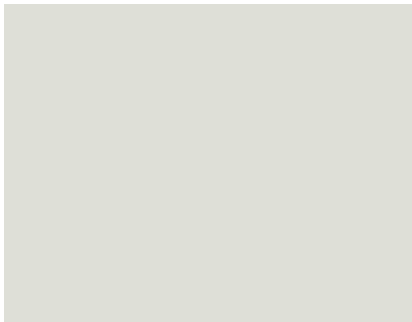
All orders include a complete packing list and detailed shop drawings to guide customers as they install our products in the field.



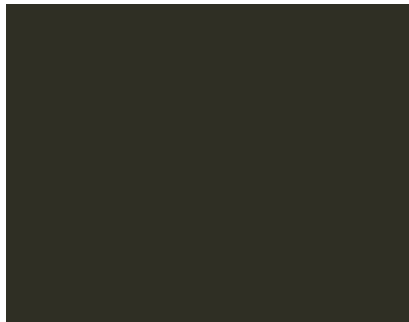
# STANDARD PPG FINISHES

Our standard finish options include primed for field paint or high-performance fluoropolymer paint certified by **PPG**, chosen from our standard colors below. Other custom specialty finishes are available, including custom **PPG** finishes, **Kynar®**, aluminum clad, stainless steel clad or custom color match at an additional cost.

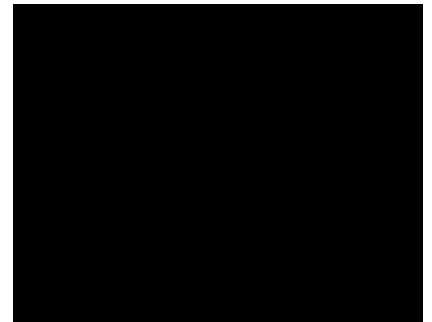
## STANDARD PPG FINISHES



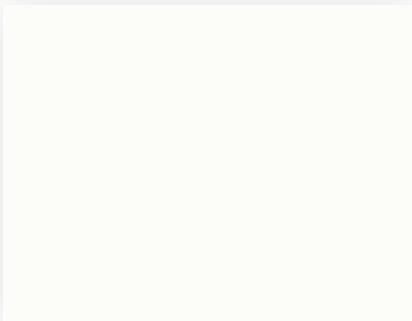
Light Silver  
AD3Y1346N



Dark Bronze  
ADS817703N



Black  
ADS230103N



Bone White  
ADS225903N



Aluminum Gray  
ADS230503N

*These color options are for reference only.* For exact color matching, please refer to PPG's color chart.

# STANDARD HARDWARE OPTIONS

## LOCKSET (PULL HANDLES)

PBB 4B81 4.5" x 4.5" Butt-Hinges

Schlage L9070J 06A 626 Lockset

LCN 4040XP-RW/PA-AL Closer

420APKL Automatic Door Bottom (use 412CPKL for the 20 Minute Aluminum Door)

S44D Weather Seal

## RIM PANIC (PANIC WITH LATCH)

PBB 4B81 4.5" x 4.5" Butt-Hinges

PDQ 6200R-F-626 6-EW-08-PHL Rim Exit Device/Trim

LCN 4040XP-REG/PA-AL Closer

420APKL Automatic Door Bottom (use 412CPKL for the 20 Minute Aluminum Door)

S44D Weather Seal

## SURFACE MOUNTED VERTICAL RODS

PBB 4B81 4.5" x 4.5" Butt-Hinges

PDQ 6200V-F-626 6-EW-08-PHL Surface Vertical Rod Exit Device/Trim

LCN 4040XP-REG/PA-AL Closer

420APKL Automatic Door Bottom (use 412CPKL for the 20 Minute Aluminum Door)

29310CPK Astragal

S44D Weather Seal

## CONCEALED VERTICAL RODS

PBB 4B81 4.5" x 4.5" Butt-Hinges

PDQ 6200CV-F-626 6-EW-08-PHL Concealed Vertical Rod Exit Device/Trim

LCN 4040XP-REG/PA-AL Closer

420APKL Automatic Door Bottom (use 412CPKL for the 20 Minute Aluminum Door)

29310CPK Astragal

S44D Weather Seal

***We can accommodate most specialty hardware options.*** Give us a call at ***1-866-TITANMP (846-2667)*** to discuss the solution that you need!



# PRODUCT QUICK REFERENCE CHART

| <br><b>Titan Metal Products</b><br><small>USA</small> | PERFORMANCE |                  |           |           |          |       |                 |
|--|-------------|------------------|-----------|-----------|----------|-------|-----------------|
|  | FIRE        | TEMPERATURE RISE | BALLISTIC | DETENTION | SECURITY | SMOKE | WATER RESISTANT |
| BUILDERS SERIES 60-90 MINUTE TEMPERATURE RISE DOORS  | ✓           | ✓                | ○         |           |          | ✓     |                 |
| BUILDERS SERIES 20-45 MINUTE FIRE PROTECTIVE DOORS   | ✓           |                  | ○         |           |          | ✓     |                 |
| BUILDERS SERIES 3 HOUR TEMPERATURE RISE DOORS  | ✓           | ✓                | ○         |           |          | ✓     |                 |
| TITAN 20 MINUTE ALUMINUM DOORS AND FRAMES  | ✓           |                  |           |           |          | ✓     |                 |
| 45 MINUTE FIRE RATED WINDOWS, SIDELITES, TRANSOMS  | ✓           |                  |           |           |          |       |                 |
| TITAN VISION KITS  | ✓           | ○                |           |           |          |       |                 |
| BALLISTIC DOORS AND FRAMES RATED TO UL 752 LEVEL 3   | ○           | ○                | ✓         |           |          | ○     |                 |
| DETENTION DOORS AND FRAMES   | ○           | ○                | ✓         | ✓         |          | ○     |                 |
| STAINLESS STEEL DOORS AND FRAMES   | ○           | ○                |           |           |          | ○     |                 |
| SECURITY RATED DOORS AND FRAMES  | ✓           | ✓                |           |           | ✓        | ○     |                 |
| SMOKE RATED DOORS AND FRAMES   |             |                  |           |           |          | ✓     |                 |
| WATER RESISTANT DOORS AND FRAMES   | ○           |                  |           |           |          |       | ✓               |
| HURRICANE RATED DOORS AND FRAMES   | ○           | ○                |           |           |          | ○     |                 |
| ACOUSTIC RATED DOORS AND FRAMES  | ○           | ○                |           |           |          | ○     |                 |

✓ STANDARD    ○ CUSTOM OPTION

|           |          | LAB<br>CERTIFICATION |    |                       | DOOR<br>CONSTRUCTION |          |                 | PANEL      |                  |        | SINGLE/<br>PAIR |      | INTERIOR/<br>EXTERIOR |          | FINISH OPTIONS         |       |          |                 |               |                      |
|-----------|----------|----------------------|----|-----------------------|----------------------|----------|-----------------|------------|------------------|--------|-----------------|------|-----------------------|----------|------------------------|-------|----------|-----------------|---------------|----------------------|
| HURRICANE | ACOUSTIC | INTERTEK             | UL | GUARDIAN LABORATORIES | STEEL                | ALUMINUM | STAINLESS STEEL | NO GLAZING | GLAZING SUPPLIED | LOUVER | SINGLE          | PAIR | INTERIOR              | EXTERIOR | PRIMED FOR FIELD PAINT | PAINT | ANODIZED | STAINLESS STEEL | ALUMINUM CLAD | STAINLESS STEEL CLAD |
|           |          | ✓                    | ✓  |                       | ✓                    |          |                 | ✓          | ✓                |        | ✓               | ✓    | ✓                     | ✓        | ✓                      | ✓     |          |                 | ✓             | ✓                    |
|           |          | ✓                    | ✓  |                       | ✓                    |          |                 | ✓          | ✓                |        | ✓               | ✓    | ✓                     | ✓        | ✓                      | ✓     |          |                 | ✓             | ✓                    |
|           |          | ✓                    | ✓  |                       | ✓                    |          |                 | ✓          | ✓                |        | ✓               | ✓    | ✓                     | ✓        | ✓                      | ✓     |          |                 | ✓             | ✓                    |
|           |          | ✓                    |    |                       |                      | ✓        |                 |            | ✓                |        | ✓               | ✓    | ✓                     |          | ✓                      | ✓     | ✓        |                 |               |                      |
|           |          |                      | ✓  |                       | ✓                    |          |                 |            | ✓                |        |                 |      | ✓                     | ✓        | ✓                      | ✓     |          |                 | ✓             | ✓                    |
|           |          |                      | ✓  |                       | ✓                    |          |                 |            | ✓                |        |                 |      | ✓                     | ✓        | ✓                      | ✓     |          |                 |               |                      |
|           |          | ✓                    |    |                       | ✓                    |          |                 | ✓          | ✓                |        | ✓               | ✓    | ✓                     | ✓        | ✓                      | ✓     |          |                 | ✓             | ✓                    |
|           |          |                      |    | ✓                     | ✓                    |          |                 | ✓          | ✓                |        | ✓               | ✓    | ✓                     | ✓        | ✓                      | ✓     |          |                 | ✓             | ✓                    |
|           |          | ✓                    |    |                       |                      |          | ✓               | ✓          | ✓                |        | ✓               | ✓    | ✓                     | ✓        |                        |       |          | ✓               |               |                      |
|           |          | ✓                    |    |                       | ✓                    |          |                 | ✓          | ✓                | ✓      | ✓               | ✓    | ✓                     | ✓        | ✓                      | ✓     |          |                 | ✓             | ✓                    |
|           |          |                      |    |                       | ✓                    |          |                 | ✓          | ✓                |        | ✓               | ✓    | ✓                     | ✓        | ✓                      | ✓     |          |                 | ✓             | ✓                    |
|           |          |                      |    |                       |                      | ✓        | ✓               | ✓          | ✓                |        | ✓               | ✓    | ✓                     | ✓        | ✓                      | ✓     | ✓        | ✓               | ✓             | ✓                    |
| ✓         |          | ✓                    |    |                       | ✓                    |          |                 | ✓          |                  |        | ✓               | ✓    |                       | ✓        | ✓                      | ✓     |          |                 | ✓             | ✓                    |
|           | ✓        | ✓                    |    |                       | ✓                    |          |                 | ✓          | ✓                |        | ✓               | ✓    | ✓                     | ✓        | ✓                      | ✓     |          |                 | ✓             | ✓                    |

Please refer to the individual product pages for more detailed information.



# BUILDERS SERIES 60-90 MINUTE TEMPERATURE RISE DOORS



FIRE RATED



POSITIVE PRESSURE



TEMPERATURE RISE



APPROVED WITH SAFTI **FIRST** GLAZING



SAFETY GLAZING



SMOKE RATED



SINGLE DOOR



PAIR DOOR



GREEN



LISTED BY INTERTEK



LISTED BY UL



USA-MADE

## PRODUCT ADVANTAGES

- ▶ 60-90 minute, full vision temperature rise doors tested and approved with clear **SuperLite® II-XL** fire resistive glazing by **SAFTI FIRST®**. For other available approved glazings, call **Titan Metal Products**.
- ▶ Easily integrates with **GPX® Architectural Series** wall system for a complete 1 to 2 hour fire resistive wall and door assembly.
- ▶ Standard door profiles include 6 in. door stile, 6 in. door top rail and 2 in. door frame. Narrow door profiles include 3-¾ in. door stile, 3-¾ in. door top rail and 1-½ in. door frame. Both the standard and narrow door profile options include a 10 in. ADA-compliant bottom rail, which can be modified with AHJ approval.
- ▶ Depending on glazing selection, door thickness ranges from 1-¾ in. to 3 in.
- ▶ Doors up to 10 ft. tall for interior or exterior applications.
- ▶ Listed and labeled by UL and Intertek.
- ▶ USA-manufactured for fast lead times and competitive pricing.
- ▶ 5 year manufacturer's warranty.
- ▶ For specialty construction including dutch doors, please call **Titan Metal Products**.

## SIZE CHART

### Maximum Door Opening

| Single Door                         | Pair Door                           |
|-------------------------------------|-------------------------------------|
| 54 in. x 120 in. (1.37 m x 3.05 m)* | 96 in. x 120 in. (2.44 m x 3.05 m)* |

\*For maximum door sizes, continuous hinges will be required.

## DOOR CONSTRUCTION

Doors and door frames are made in heavy duty steel and insulated to meet the 450° F temperature rise door requirements. Door frames are shipped welded as standard and can be shipped knocked down upon request for ease of assembly in the field.

## HARDWARE OPTIONS

**Titan Metal Products** offers standard hardware packages (refer to page 10) and can accommodate most specialty hardware options.



## APPROVALS

UL 10B, UL 10C, UL 1784, NFPA 80, NFPA 252, ASTM E152, ASTM E2074, CAN/ULC-S104, CPSC 16 CFR 1201 Cat. I. & II., ANSI Z97.1, HMMA 860, HMMA 861, HMMA 866

## THE TITAN DIFFERENCE

**Titan Metal Products** is the only manufacturer that can supply a temperature rise door with full vision glazing for 90 minutes **up to 10 ft. tall**.



# BUILDERS SERIES 20-45 MINUTE FIRE PROTECTIVE DOORS



FIRE RATED



POSITIVE PRESSURE



APPROVED WITH SAFTI **FIRST** GLAZING



SAFETY GLAZING



SMOKE RATED



SINGLE DOOR



PAIR DOOR



GREEN



LISTED BY INTERTEK



LISTED BY UL



USA-MADE

## PRODUCT ADVANTAGES

- ▶ 20-45 minute, full vision fire protective door tested and approved with patented **SuperClear® 45-HS-LI** (hose stream, low-iron) or **SuperLite® I-20** minute fire protective glazing by **SAFTI FIRST®**. For other available approved glazings, call **Titan Metal Products**.
- ▶ Standard door profiles include 5 in. door stile, 5 in. door top rail and 2 in. door frame. Narrow door profiles include 3-¾ in. door stile, 3-¾ in. door top rail and 1-⅞ in. door frame. Both the standard and narrow door profile options include a 10 in. ADA-compliant bottom rail, which can be modified with AHJ approval.
- ▶ Depending on glazing selection, door thickness ranges from 1-¾ in. to 3 in.
- ▶ Doors up to 10 ft. tall for interior or exterior applications.
- ▶ Listed and labeled by UL and Intertek.
- ▶ USA-manufactured for fast lead times and competitive pricing.
- ▶ 5 year manufacturer's warranty.
- ▶ For specialty construction including dutch doors, please call **Titan Metal Products**.



## SIZE CHART

### Maximum Door Opening

| Single Door                         | Pair Door                           |
|-------------------------------------|-------------------------------------|
| 54 in. x 120 in. (1.37 m x 3.05 m)* | 96 in. x 120 in. (2.44 m x 3.05 m)* |

\*For maximum door sizes, continuous hinges will be required.

## DOOR CONSTRUCTION

Doors and door frames are made in heavy duty steel. Door frames are shipped welded as standard and can be shipped knocked down upon request for ease of assembly in the field.

## HARDWARE OPTIONS

**Titan Metal Products** offers standard hardware packages (refer to page 10) and can accommodate most specialty hardware options.

**QUESTIONS? CALL US AT 1-866-TITANMP (848-2667)**

## APPROVALS

UL 10B, UL 10C, UL 1784, NFPA 80, NFPA 252, ASTM E152, ASTM E2074, CAN/ULC-S104, CPSC 16 CFR 1201 Cat. I. & II., ANSI Z97.1, HMMA 860, HMMA 861, HMMA 866

## THE TITAN DIFFERENCE

Our 45 minute doors are glazed with patented **SuperClear® 45-HS-LI** (hose stream, low-iron) by **SAFTI FIRST®**. Other approved glazings are available. Call **Titan Metal Products** for more information.

Learn more: [safti.com/sc45](https://safti.com/sc45)



# BUILDERS SERIES 3 HOUR TEMPERATURE RISE DOORS

  
FIRE RATED

  
POSITIVE PRESSURE

  
TEMPERATURE RISE

  
APPROVED WITH SAFTI **FIRST** GLAZING

  
SAFETY GLAZING

  
SMOKE RATED

  
SINGLE DOOR

  
PAIR DOOR

  
GREEN

  
LISTED BY INTERTEK

  
LISTED BY UL

  
USA-MADE

## PRODUCT ADVANTAGES

- ▶ 3 hour temperature rise doors available in sizes up to 48 in. x 96 in. with vision lites up to 100 in.<sup>2</sup>.
- ▶ Depending on glazing selection, door thickness ranges from 1-¾ in. to 3 in.
- ▶ For interior or exterior applications.
- ▶ Listed and labeled by UL and Intertek.
- ▶ USA-manufactured for fast lead times and competitive pricing.
- ▶ 5 year manufacturer’s warranty.
- ▶ For specialty construction including dutch doors, please call **Titan Metal Products**.



## SIZE CHART

### Maximum Door Opening

| Single Door                       | Pair Door                         |
|-----------------------------------|-----------------------------------|
| 48 in. x 96 in. (1.21 m x 2.43 m) | 96 in. x 96 in. (2.44 m x 2.44 m) |

## DOOR CONSTRUCTION

Doors and door frames are made in heavy duty steel and insulated to meet the 450° F temperature rise door requirements. Door frames are shipped welded as standard and can be shipped knocked down upon request for ease of assembly in the field.

## APPROVALS

UL 10B, UL 10C, UL 1784, NFPA 80, NFPA 252, ASTM E152, ASTM E2074, CAN/ULC-S104, CPSC 16 CFR 1201 Cat. I. & II., ANSI Z97.1, HMMA 860, HMMA 861, HMMA 866

## HARDWARE OPTIONS

**Titan Metal Products** offers standard hardware packages (refer to page 10) and can accommodate most specialty hardware options.

 **QUESTIONS? CALL US AT 1-866-TITANMP (848-2667)**

### THE TITAN DIFFERENCE

Our products are listed and labeled by nationally recognized testing laboratories such as **UL**, **Intertek** and **Guardian Fire Testing Laboratories**, providing assurance that our products are tested and certified to meet the required standards.

# TITAN 20 MINUTE ALUMINUM DOORS AND FRAMES



FIRE RATED



POSITIVE  
PRESSURE



APPROVED  
WITH SAFTI **FIRST**  
GLAZING



SAFETY  
GLAZING



SMOKE RATED



SINGLE DOOR



PAIR DOOR



LISTED BY  
INTERTEK



USA-MADE

## PRODUCT ADVANTAGES

- ▶ Full vision, 20 minute stile and rail aluminum door with matching aluminum door frame.
- ▶ Tested and approved with **SuperLite® I-20** minute clear, specialty tempered safety glazing by **SAFTI FIRST®**. For other available approved glazings, call **Titan Metal Products**.
- ▶ Tested to NFPA 252 and UL 10C with positive pressure.
- ▶ Single door or pairs up to 48 in. x 108 in. (1.22 m x 2.74 m).
- ▶ Standard door profiles include 5 in. door stile, 5-½ in. door top rail and 2 in. door frame. Includes 10 in. ADA-compliant bottom rail, which can be modified with AHJ approval.
- ▶ Standard door thickness is 1-¾ in.
- ▶ Delivered factory glazed and prepped for hardware for easy installation.
- ▶ Listed and labeled by Intertek.
- ▶ USA-manufactured for fast lead times and competitive pricing.
- ▶ 5 year limited warranty.



## SIZE CHART

### Doors with SuperLite® I-20 glazing

| Fire Rating | Max. Door Opening (Single Door)    | Max. Door Opening (Pair Door)      |
|-------------|------------------------------------|------------------------------------|
| 20 minutes  | 48 in. x 108 in. (1.22 m x 2.74 m) | 96 in. x 108 in. (2.44 m x 2.74 m) |

## DOOR CONSTRUCTION

Doors and frames are made in 6063 T5 aluminum alloy.

## APPROVALS

ASTM E152, ASTM E2074, NFPA 80, NFPA 252, UL 10B, UL 10C, UL 1784, CAN/ULC-S104, CPSC 16 CFR 1201 Cat. I. & II., ANSI Z97.1

## HARDWARE OPTIONS

**Titan Metal Products** offers standard hardware packages (refer to page 10) and can accommodate most specialty hardware options.



QUESTIONS? CALL US AT 1-866-TITANMP (848-2667)

## THE TITAN DIFFERENCE

Our 20 minute aluminum door has the thinnest, narrowest profile for 20 minute aluminum doors up to 9 ft. tall.

# 45 MINUTE FIRE RATED WINDOWS, SIDELITES, TRANSOMS



FIRE RATED



POSITIVE  
PRESSURE



APPROVED  
WITH SAFTI **FIRST**  
GLAZING



SAFETY  
GLAZING



GREEN



LISTED BY  
INTERTEK



LISTED BY UL



USA-MADE

## PRODUCT ADVANTAGES

- ▶ Tested to NFPA 257/UL 9 for windows and NFPA 252/UL 10B/ UL 10C for sidelites and transoms.
- ▶ Available with a clear view of up to 4,952 in.<sup>2</sup> with **SuperLite® II-XL 45** or a clear view of up to 3,880 in.<sup>2</sup> with patented, more economical **SuperClear® 45-HS-LI** (hose stream, low-iron) by **SAFTI FIRST®**. Maximum clear view height or width not to exceed 124 in. For other available approved glazings, call **Titan Metal Products**.
- ▶ Multiple frame face profiles available from 2-½ in. to 3-¼ in.
- ▶ For interior or exterior applications.
- ▶ Listed and labeled by Intertek.
- ▶ USA-manufactured for fast lead times and competitive pricing.
- ▶ 5 year manufacturer's warranty.



## FRAME CONSTRUCTION

Frames are constructed in steel or aluminum.  
Frames are shipped standard knocked down for easy installation in the field or welded as an option.

## APPROVALS

NFPA 80, NFPA 257, UL 9, NFPA 252, UL 10B, UL 10C,  
CAN/ULC-S104, CAN/ULC-S106, CPSC 16 CFR 1201 Cat. I. & II,  
ANSI Z97.1, HMMA 860, HMMA 861,  
HMMA 866



## THE TITAN DIFFERENCE

Depending on size, our window, sidelite and transom frames can be glazed with **SuperLite® II-XL 45** or **SuperClear® 45-HS-LI** (patented) by **SAFTI FIRST®**, an economical, award-winning, revolutionary, optically clear, low iron fire rated glass product for all 45 minute applications with hose stream.

Learn more: [safti.com/sc45](http://safti.com/sc45)



QUESTIONS? CALL US AT 1-866-TITANMP (848-2667)



# TITAN VISION KITS



FIRE RATED



POSITIVE  
PRESSURE



APPROVED  
WITH SAFTI **FIRST**  
GLAZING



SAFETY  
GLAZING



GREEN



LISTED BY UL



USA-MADE

## PRODUCT ADVANTAGES

- ▶ Vision kits can be used in any 1-3/4 in. to 3 in. door thickness.
- ▶ Listed with fire ratings from 20-90 minutes (non-temperature rise or temperature rise) hollow metal, wood or composite doors.
- ▶ Clear view vision lite areas up to 3,288 in.<sup>2</sup>.
- ▶ Can accommodate multiple glass thicknesses up to 3 in.
- ▶ Can be used with **SuperLite® I**, **SuperClear® 45-HS-LI** (patented), **SuperLite® X-45/60/90** and **SuperLite® II-XL** glazing by **SAFTI FIRST®**. For maximum sizes and other available approved glazings, call **Titan Metal Products**.
- ▶ Constructed in 20-gauge steel, corner keyed or welded. Comes with gasketing and countersunk mounting holes on the interior side.
- ▶ USA-manufactured for fast lead times and competitive pricing.
- ▶ 5 year manufacturer's warranty.



## APPROVALS

NFPA 80, NFPA 252, UL 10C, CAN/ULC-S106, CPSC  
16 CFR 1201, ANSI Z97.1



## THE TITAN DIFFERENCE

Our vision kits are the most flexible in the market! We can accommodate multiple glass thicknesses up to 3 in. and in sizes up to 3,288 in.<sup>2</sup>. It can be used with any approved glazing product including our full selection of **SAFTI FIRST®** fire rated glass products. Multiple finishes are also available to meet the aesthetic requirements of your project. Call **Titan Metal Products** for more information.



QUESTIONS? CALL US AT 1-866-TITANMP (848-2667)

# BALLISTIC DOORS AND FRAMES RATED TO UL 752 LEVEL 3



BALLISTIC



BALLISTIC  
GLAZING



SINGLE DOOR



PAIR DOOR



GREEN



LISTED BY  
INTERTEK



USA-MADE

## CUSTOM OPTIONS:



FIRE RATED



POSITIVE  
PRESSURE



TEMPERATURE  
RISE



APPROVED  
WITH SAFTI **FIRST**  
GLAZING



SMOKE RATED

## PRODUCT ADVANTAGES

- ▶ Meets UL 752 Level 1, 2 and 3 for use in single door or pairs.
- ▶ Can be used with any listed ballistic glazing in compliance with UL 752 Level 1, 2 or 3.
- ▶ Standard door profiles include 6 in. door stile, 6 in. door top rail and 2 in. door frame. Narrow door profiles include 3-¾ in. door stile, 3-¾ in. door top rail and 1-⅞ in. door frame. Both the standard and narrow door profile options include a 10 in. ADA-compliant bottom rail, which can be modified with AHJ approval.
- ▶ Depending on glazing selection, door thickness ranges from 1-¾ in. to 3 in.
- ▶ For interior or exterior applications.
- ▶ Listed and labeled by Intertek.
- ▶ USA-manufactured for fast lead times and competitive pricing.
- ▶ 5 year manufacturer's warranty.



## HARDWARE OPTIONS

**Titan Metal Products** offers standard hardware packages (refer to page 10) and can accommodate most specialty hardware options.

## UL 752 BALLISTIC RATING

Level 1 = 9 mm Full Metal Copper Jacket with Lead Core  
Level 2 = .357 Magnum Jacketed Lead Soft Point  
Level 3 = .44 Magnum Lead Semi-Wadcutter Gas Checked

## APPROVALS

UL 752, UL 1784, HMMA 860, HMMA 861,  
HMMA 862, HMMA 866

## THE TITAN DIFFERENCE

Our doors can be customized! Custom options include **fire rated**, **positive pressure**, **temperature rise** and more.

**QUESTIONS?** CALL US AT 1-866-TITANMP (848-2667)

# DETENTION DOORS AND FRAMES



DETENTION



DETENTION  
GLAZING



BALLISTIC



SINGLE DOOR



PAIR DOOR



GREEN



LISTED BY GUARDIAN  
FIRE TESTING  
LABORATORIES



USA-MADE

## CUSTOM OPTIONS:



FIRE RATED



POSITIVE  
PRESSURE



TEMPERATURE  
RISE



APPROVED  
WITH SAFTI **FIRST**  
GLAZING



SMOKE RATED

## PRODUCT ADVANTAGES

- ▶ Tested to ASTM F1450, Standard Test Methods for Hollow Metal Swinging Door Assemblies for Detention & Correctional Facilities; and certified to meet NAAMM/HMMA 863 requirements for use in detention and correctional facilities.
- ▶ Complies with ASTM F1233, Standard Test Method for Security Glazing Materials and Systems; ASTM F1915, Standard Test Methods for Glazing for Detention Facilities; ASTM F1592, Standard Test Methods for Detention Hollow Metal Vision Systems; ASTM F1577, Standard Test Methods for Detention Locks for Swinging Doors; ASTM F1643, Standard Test Methods for Detention Locks for Swinging Doors; SDI A250 Specifications for Standard Steel Doors and Frames.
- ▶ Meets UL 752 Level 3 Ballistic ratings. All detention doors that meet F1450 are required to have UL 752 Level 3.
- ▶ Depending on glazing selection, door thickness ranges from 2 in. to 4 in.
- ▶ Can be supplied to also meet smoke and fire ratings up to 3 hours with positive pressure.
- ▶ For interior or exterior applications.
- ▶ Listed and labeled by Guardian Fire Testing Laboratories, Inc.
- ▶ USA-manufactured for fast lead times and competitive pricing.
- ▶ 5 year manufacturer's warranty.



## EXAMPLES OF CDCR DOORS



CDCR Door Type A



CDCR Door Type C



CDCR Door Type F

## DOOR CONSTRUCTION

Doors and door frames are made in 14-gauge steel and insulated to meet the 450° F temperature rise door requirements. Pair doors include a vertical mullion. Door frames are shipped welded.

## HARDWARE OPTIONS

Contact **Titan Metal Products** for more information.

## APPROVALS

ASTM F1450, ASTM F1233, ASTM F1915, ASTM 1592, ASTM F1577, ASTM F1643, SDI A250, UL 752, UL 1784, NFPA 80, NFPA 252, UL 10C, UL 10B, CAN/ULC-S104, HMMA 860, HMMA 861, HMMA 862, HMMA 863, DEMA 004, CPSC 16 CFR 1201, ANSI Z97.1

## THE TITAN DIFFERENCE

We are the only detention door manufacturer based in California that meets the California Department of Corrections and Rehabilitation (CDCR) requirements.



QUESTIONS? CALL US AT 1-866-TITANMP (848-2667)



# STAINLESS STEEL DOORS AND FRAMES



SAFETY  
GLAZING



SINGLE DOOR



PAIR DOOR



GREEN



LISTED BY  
INTERTEK



USA-MADE

CUSTOM OPTIONS:



FIRE RATED



POSITIVE  
PRESSURE



APPROVED  
WITH SAFTI **FIRST**  
GLAZING



SMOKE RATED

## PRODUCT ADVANTAGES

- ▶ Stylish architectural doors for commercial, institutional and industrial applications.
- ▶ Durable, hygienic and corrosion resistant.
- ▶ No. 304 alloy standard. No. 316 alloy available for special applications in extremely corrosive environments.
- ▶ Non-fire rated and fire rated options available.
- ▶ Standard door profiles include 6 in. door stile, 6 in. door top rail and 2 in. door frame. Includes a 10 in. ADA-compliant bottom rail, which can be modified with AHJ approval.
- ▶ Depending on glazing selection, door thickness ranges from 1-¾ in. to 3 in.
- ▶ Fire rated doors listed by Intertek up to 3 hours. Available with full vision glazing up to 90 minutes using fire rated glazing options from **SAFTI FIRST®**.
- ▶ For interior or exterior applications.
- ▶ USA-manufactured for fast lead times and competitive pricing.
- ▶ 5 year manufacturer's warranty.



## SIZE CHARTS

### Maximum Sizes for Doors up to 90 Minutes

| Single Door                       | Pair Door                          |
|-----------------------------------|------------------------------------|
| 48 in. x 96 in. (1.21 m x 2.43 m) | 84 in. x 86 in. (2.13 m x 2.18 m)* |

\*3/4 in. astragal must be applied to standard pairs.

### Maximum Sizes for 3 Hour Doors

| Single Door                       |
|-----------------------------------|
| 48 in. x 96 in. (1.21 m x 2.43 m) |

## DOOR CONSTRUCTION

Doors and door frames are made in 16-gauge stainless steel. Doors are steel stiffened and insulated. Door frames are shipped welded.

## HARDWARE OPTIONS

**Titan Metal Products** offers standard hardware packages (refer to page 10) and can accommodate most specialty hardware options.

## FINISH OPTIONS

Brushed Satin (No. 4), Fine Satin (No. 6), Mirror (No. 8), Mill (No. 2), XL Blend

## APPROVALS

UL 10B, UL 10C, UL 1784, NFPA 80, NFPA 252, CAN/ULC-S104, CPSC 16 CFR 1201 Cat. I. & II, ANSI Z97.1, HMMA 860, HMMA 861, HMMA 866

## THE TITAN DIFFERENCE

Our dedicated team of experts are ready to assist you in any stage of your project. Just give us a call!

 **QUESTIONS?** CALL US AT 1-866-TITANMP (848-2667)

# SECURITY RATED DOORS AND FRAMES



SECURITY



FIRE RATED



APPROVED  
WITH SAFTI **FIRST**  
GLAZING



SAFETY  
GLAZING



SINGLE DOOR



PAIR DOOR



GREEN



LISTED BY  
INTERTEK



USA-MADE

## CUSTOM OPTIONS:



SMOKE RATED

## PRODUCT ADVANTAGES

- ▶ Tested to NFPA 252, UL 10B, UL 10C and CAN/ULC-S104 up to 3 hours.
- ▶ Large sizes available in single door or pairs.
- ▶ Available with vision lite.
- ▶ Meets 450° F @ 30 minutes temperature rise door requirement.
- ▶ Door thickness ranges from 1-<sup>3</sup>/<sub>4</sub> in. to 3 in.
- ▶ Listed and labeled by Intertek.
- ▶ USA-manufactured for fast lead times and competitive pricing.
- ▶ 5 year manufacturer's warranty.



## SIZE CHARTS

### Maximum Sizes for Doors up to 90 Minutes

| Single Door                        | Pair Door                            |
|------------------------------------|--------------------------------------|
| 60 in. x 144 in. (1.52 m x 3.65 m) | 120 in. x 144 in. (3.04 m x 3.65 m)* |

\*3/4 in. astragal must be applied to standard pairs.

### Maximum Sizes for 3 Hour Doors

| Single Door                       |
|-----------------------------------|
| 48 in. x 96 in. (1.21 m x 2.43 m) |

## DOOR CONSTRUCTION

Doors and door frames are made in 14-gauge G-90 steel and insulated to meet the 450° F temperature rise door requirements. Door frames are shipped welded as standard and can be shipped knocked down upon request for ease of assembly in the field.

## APPROVALS

NFPA 80, NFPA 252, UL 63, UL 10B, UL 10C, UL 1784, CAN/ULC-S104, HMMA 860, HMMA 861, HMMA 862, HMMA 866, CPSC 16 CFR 1201, ANSI Z97.1

## HARDWARE OPTIONS

**Titan Metal Products** offers standard hardware packages (refer to page 10) and can accommodate most specialty hardware options.

## THE TITAN DIFFERENCE

Our security rated doors and frames meet the strict fire rated security requirements.



QUESTIONS? CALL US AT 1-866-TITANMP (848-2667)

# SMOKE RATED DOORS AND FRAMES



SMOKE RATED



SAFETY GLAZING



SINGLE DOOR



PAIR DOOR



GREEN



USA-MADE

## PRODUCT ADVANTAGES

- ▶ S labeled doors meeting UL 1784, the Standard for Safety of Air Leakage Tests of Door Assemblies and other Opening Protectives.
- ▶ Complies with NFPA 105, Standard for Smoke Door Assemblies and other Opening Protectives.
- ▶ Standard door profiles include 6 in. door stile, 6 in. door top rail and 2 in. door frame. Narrow door profiles include 3-¾ in. door stile, 3-¾ in. door top rail and 1-⅞ in. door frame. Both the standard and narrow door profile options include a 10 in. ADA-compliant bottom rail, which can be modified with AHJ approval.
- ▶ Depending on glazing selection, door thickness ranges from 1-¾ in. to 3 in.
- ▶ Available in single door or pairs.
- ▶ USA-manufactured for fast lead times and competitive pricing.
- ▶ 5 year manufacturer's warranty.



## DOOR CONSTRUCTION

Doors and door frames are made in 16-gauge A-60 steel. Door frames are shipped welded as standard and can be shipped knocked down upon request for ease of assembly in the field.

## HARDWARE OPTIONS

**Titan Metal Products** offers standard hardware packages (refer to page 10) and can accommodate most specialty hardware options.

## APPROVALS

UL 1784, NFPA 105, NFPA 80, HMMA 860, HMMA 861, HMMA 866, CPSC 16 CFR 1201 Cat. I & II., ANSI Z97.1

## THE TITAN DIFFERENCE

Our doors offer flexible design options to meet any desired aesthetic while performing the required life safety function.



**QUESTIONS?** CALL US AT 1-866-TITANMP (848-2667)



# WATER RESISTANT DOORS AND FRAMES



WATER  
RESISTANT



SAFETY GLAZING



SINGLE DOOR



PAIR DOOR



USA-MADE

## CUSTOM OPTIONS:



FIRE RATED



POSITIVE  
PRESSURE



APPROVED  
WITH SAFTI **FIRST**  
GLAZING



SMOKE RATED

## PRODUCT ADVANTAGES

- ▶ Durable, water resistant doors and frames designed to survive heavy washing and resist corrosion.
- ▶ Ideal for laboratories, medical facilities, water treatment plants, clean rooms, food processing plants or any facility where frequent pressure washing is performed to maintain a sanitary environment.
- ▶ Sealed door core.
- ▶ Welded seamless door edge.
- ▶ Stainless steel available.
- ▶ Glazed vision areas and custom sanitary door vision lites available.
- ▶ Continuously welded frames.
- ▶ Depending on glazing selection, door thickness ranges from 1- $\frac{3}{4}$  in. to 3 in.
- ▶ Available in single door or pairs.
- ▶ For interior or exterior applications.
- ▶ Consult manufacturer for available fire ratings.
- ▶ USA-manufactured for fast lead times and competitive pricing.
- ▶ 5 year manufacturer's warranty.



## DOOR CONSTRUCTION

Doors are made in 16-gauge steel and door frames are made in 14-gauge steel. Door frames are shipped welded as standard and can be shipped knocked down upon request for ease of assembly in the field.

## HARDWARE OPTIONS

**Titan Metal Products** offers standard hardware packages (refer to page 10) and can accommodate most specialty hardware options.

 **QUESTIONS? CALL US AT 1-866-TITANMP (848-2667)**

## THE TITAN DIFFERENCE

As a USA-based manufacturer with decades of experience in the building industry, you can count on us to deliver the solution that you need for your project.

# HURRICANE RATED DOORS AND FRAMES



HURRICANE



SINGLE DOOR



PAIR DOOR



LISTED BY  
INTERTEK



USA-MADE

## CUSTOM OPTIONS:



FIRE RATED



POSITIVE  
PRESSURE



TEMPERATURE  
RISE



SMOKE RATED

## PRODUCT ADVANTAGES

- ▶ Meets Structural Performance, Static Air Pressure, Cyclic Pressure and Missile Impact Protection for ASTM E330, ASTM 1886 and ASTM 1996.
- ▶ Available in single door or pairs.
- ▶ USA-manufactured for fast lead times and competitive pricing.
- ▶ 5 year manufacturer's warranty.

## DOOR CONSTRUCTION

### Doors

Flush 861 construction; Material thickness 16-gauge.

### Frames

Welded 861 construction; Minimum 16-gauge thickness for single doors and minimum 14-gauge thickness for pair doors.



## HARDWARE OPTIONS

| Opening | Hurricane Approved Hardware  |
|---------|--|
| Single  | Cylindrical lock   |
| Single  | Mortise lock   |
| Single  | Rim Exit   |
| Opening | Hurricane Approved Hardware  |
| Pair    | Cylindrical lock/Manual Surface Bolts  |
| Pair    | Mortise lock/Manual Surface Bolts  |
| Pair    | Rim Exit Device x Rim Exit Device w/<br>Hardware Mullion                             |
| Pair    | Concealed Vertical Rod x Surface<br>Vertical Rod (to get CVR x CVR and<br>SVR x SVR) |

## APPROVALS

ASTM E330, ASTM E1886, ASTM E1996, UL 1784

## THE TITAN DIFFERENCE

Our hurricane rated doors and frames can be customized to also meet fire rated and temperature rise door requirements.



QUESTIONS? CALL US AT 1-866-TITANMP (848-2667)

# ACOUSTIC RATED DOORS AND FRAMES



ACOUSTIC



ACOUSTIC  
GLAZING



SINGLE DOOR



PAIR DOOR



LISTED BY  
INTERTEK



USA-MADE

## CUSTOM OPTIONS:



FIRE RATED



POSITIVE  
PRESSURE



TEMPERATURE  
RISE



APPROVED  
WITH SAFTI **FIRST**  
GLAZING



SMOKE RATED

## PRODUCT ADVANTAGES

- ▶ High Sound Transmission Class Rating (STC) up to 44 STC for use in recording studios, auditoriums, schools, offices, conference rooms, machinery enclosures, and other applications where noise abatement is required or desired.
- ▶ Standard door profiles include 6 in. door stile, 6 in. door top rail and 2 in. door frame. Narrow door profiles include 3- $\frac{3}{4}$  in. door stile, 3- $\frac{3}{4}$  in. door top rail and 1- $\frac{1}{8}$  in. door frame. Both the standard and narrow door profile options include a 10 in. ADA-compliant bottom rail, which can be modified with AHJ approval.
- ▶ Depending on glazing selection, door thickness ranges from 1- $\frac{3}{4}$  in. to 3 in.
- ▶ Available in single door or pairs.
- ▶ Available with fire ratings up to 90 minutes with positive pressure.
- ▶ USA-manufactured for fast lead times and competitive pricing.
- ▶ 5 year manufacturer's warranty.



## DOOR CONSTRUCTION

Doors and door frames are made in 16-gauge A-60 steel. Door frames are shipped welded as standard and can be shipped knocked down upon request for ease of assembly in the field.

## HARDWARE OPTIONS

**Titan Metal Products** offers standard hardware packages (refer to page 10) and can accommodate most specialty hardware options.

## APPROVALS

ASTM E90, UL 10C, UL 10B, UL 1784, NFPA 80, NFPA 252, CAN/ULC-S104, CPSC 16 CFR 1201 Cat. I & II., ANSI Z97.1, HMMA 860, HMMA 861, HMMA 865

## THE TITAN DIFFERENCE

Our in-house research and development team is constantly working on bringing new and innovative, building products to the market.



QUESTIONS? CALL US AT 1-866-TITANMP (848-2667)



# FUTURE PRODUCT OFFERINGS

Due to the recent acquisition of **Titan Metal Products** by **SAFTI FIRST®**, certain products are under certification review at this time. Stay tuned for further announcements!

## FITQUICK™ FIRE RATED FRAMES

Revolutionary, easy-to-install fire protective and fire resistive framing system rated from 45-120 minutes with clean, sharp edges and uniform sightlines that mimic the look and feel of popular aluminum storefront systems.



## PSYCHIATRIC FACILITIES DOORS AND FRAMES

Designed with patient and staff safety in mind, these doors and frames can be equipped with ligature-resistant hardware and door accessories, tamper-proof fasteners and other safety mechanisms.



## BLAST RATED DOORS AND FRAMES

Engineered to meet or exceed ASTM, GSA and Department of Defense (DoD) Minimum Antiterrorism Standards for Buildings for Blast Resistance.



## LEAD LINED DOORS

Typically used in imaging rooms, healthcare facilities, military and government facilities, nuclear power plants and laboratories, these doors are designed with durable lead sheets to protect against radiation and available with fire ratings up to 3 hours.



## TORNADO RATED DOORS AND FRAMES

Engineered to meet Federal Emergency Management Agency (FEMA) P-361 and Department of Defense (DoD) Standard 1020 for use in storm shelters, community shelters, residential shelters and safe rooms.



## ELEVATOR DOORS AND FRAMES

Fire rated elevator doors and frames tested to NFPA 252, UL 10B, UL 10C and CAN/ULC-S104 up to 90 minutes.



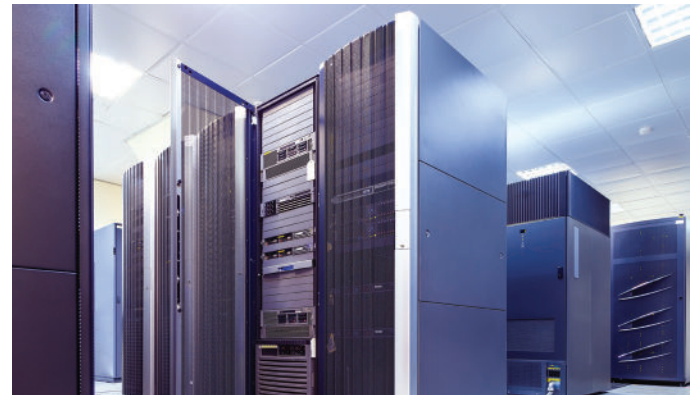
## FLOOD RESISTANT DOORS AND FRAMES

Engineered to meet American National Standard Institute (ANSI) FM Approval 2510 for Flood Abatement Equipment for use in pump rooms, water treatment plants, marinas, transportation terminals and other areas prone to flooding.



## RADIO FREQUENCY (RF) SHIELDING DOORS AND FRAMES

Engineered to meet National Security Administration (NSA) Specification No. 94-106 for shielded enclosures to attenuate electromagnetic radiation for use in laboratories, data centers, military and government facilities and other applications where maintaining a controlled environment for accurate test data or protecting sensitive information are critical.





# PROJECT GALLERY



**PROJECT:** Waste Management Headquarters  
**LOCATION:** Houston, TX  
**ARCHITECT:** Perkins + Will  
**INSTALLER:** Lakeview Glass & Mirror  
**PRODUCTS:** 90 minute Builders Series Temperature Rise Pair Door (8 ft. x 9 ft.) with SuperLite® II-XL 90 with Starphire Ultra-Clear® glazing



**PROJECT:** The Quad at the University of Houston  
**LOCATION:** Houston, TX  
**ARCHITECT:** EYP  
**INSTALLER:** Haley-Greer Inc.  
**PRODUCTS:** 45 minute Builders Series Single Door (3 ft. x 8 ft.) with patented SuperClear® 45-HS-LI glazing



**PROJECT:** Starbucks Reserve Roastery  
**LOCATION:** Chicago, IL  
**ARCHITECT:** Perkins + Will  
**INSTALLER:** SG Metal & Glass  
**PRODUCTS:** 90 minute Builders Series Temperature Rise Single Door (4 ft. x 9 ft.) with SuperLite® II-XL 90 with Starphire Ultra-Clear® glazing



**PROJECT:** Old Forester Distillery  
**LOCATION:** Louisville, KY  
**ARCHITECT:** Bravura Architects  
**INSTALLER:** Kentucky Mirror and Plate Glass Company  
**PRODUCTS:** 90 minute Builders Series Temperature Rise Pair Doors (6 ft. x 8 ft.) with SuperLite® II-XL 90 glazing



**PROJECT:** Phoenix Convention Center  
**LOCATION:** Phoenix, AZ  
**ARCHITECT:** HOK Sport + Venue  
**INSTALLER:** Trainor Glass Co.  
**PRODUCTS:** 90 minute Builders Series Temperature Rise Stainless Steel Clad Pair Doors (6 ft. x 9 ft.) with SuperLite® II-XL 90 glazing



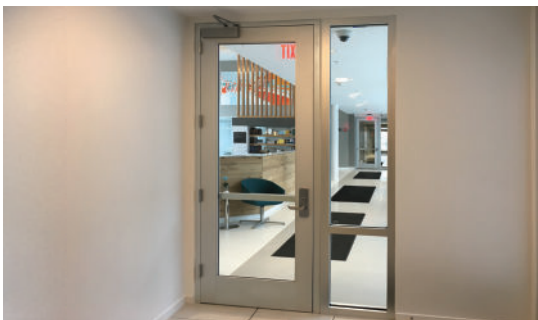
**PROJECT:** CUNY School of Law  
**LOCATION:** Long Island City, NY  
**ARCHITECT:** Kohn Pedersen Fox Associates PC  
**INSTALLER:** RG Glass Creations  
**PRODUCTS:** 90 minute Stainless Steel Temperature Rise Pair Door (6 ft. x 7 ft.) with SuperLite® II-XL 90 glazing



**PROJECT:** Fulton Street Station  
**LOCATION:** New York, NY  
**ARCHITECT:** Grimshaw  
**INSTALLER:** American Architectural  
**PRODUCTS:** 90 minute Builders Series Temperature Rise Stainless Steel Clad Pair Doors (8 ft. x 8 ft.) with SuperLite® II-XL 90 glazing



**PROJECT:** The Exploratorium  
**LOCATION:** San Francisco, CA  
**ARCHITECT:** EHDD  
**INSTALLER:** Architectural Glass & Aluminum  
**PRODUCTS:** 45 minute Builders Series Pair Doors (8 ft. x 10 ft.) with SuperLite® II-XL 45 IGU glazing



**PROJECT:** The View on Fifth  
**LOCATION:** Columbus, OH  
**ARCHITECT:** Rhode Partners Inc  
**INSTALLER:** Advanced Glass Systems LLC  
**PRODUCTS:** Titan 20 minute Aluminum Single Door (3 ft. x 9 ft.) with SuperLite® I-20 glazing



**SCAN THE QR CODE\* OR VISIT**  
**[WWW.TITANMETALPRODUCTS.COM](http://WWW.TITANMETALPRODUCTS.COM)**

*\*Scan the QR code with your mobile device. A URL will open in a browser to display a mobile web page.*



# ***Titan***



**Titan Metal Products**  
**USA**



**PROUDLY USA-MADE**

**Titan Metal Products**  
1891 Wardrobe Avenue  
Merced, CA 95341-6406

1-866-TITANMP (848-2667)  
[www.titanmetalproducts.com](http://www.titanmetalproducts.com)  
[info@titanmetalproducts.com](mailto:info@titanmetalproducts.com)

**MEMBER OF:**



**LISTED BY:**



© Titan Metal Products

November 2025